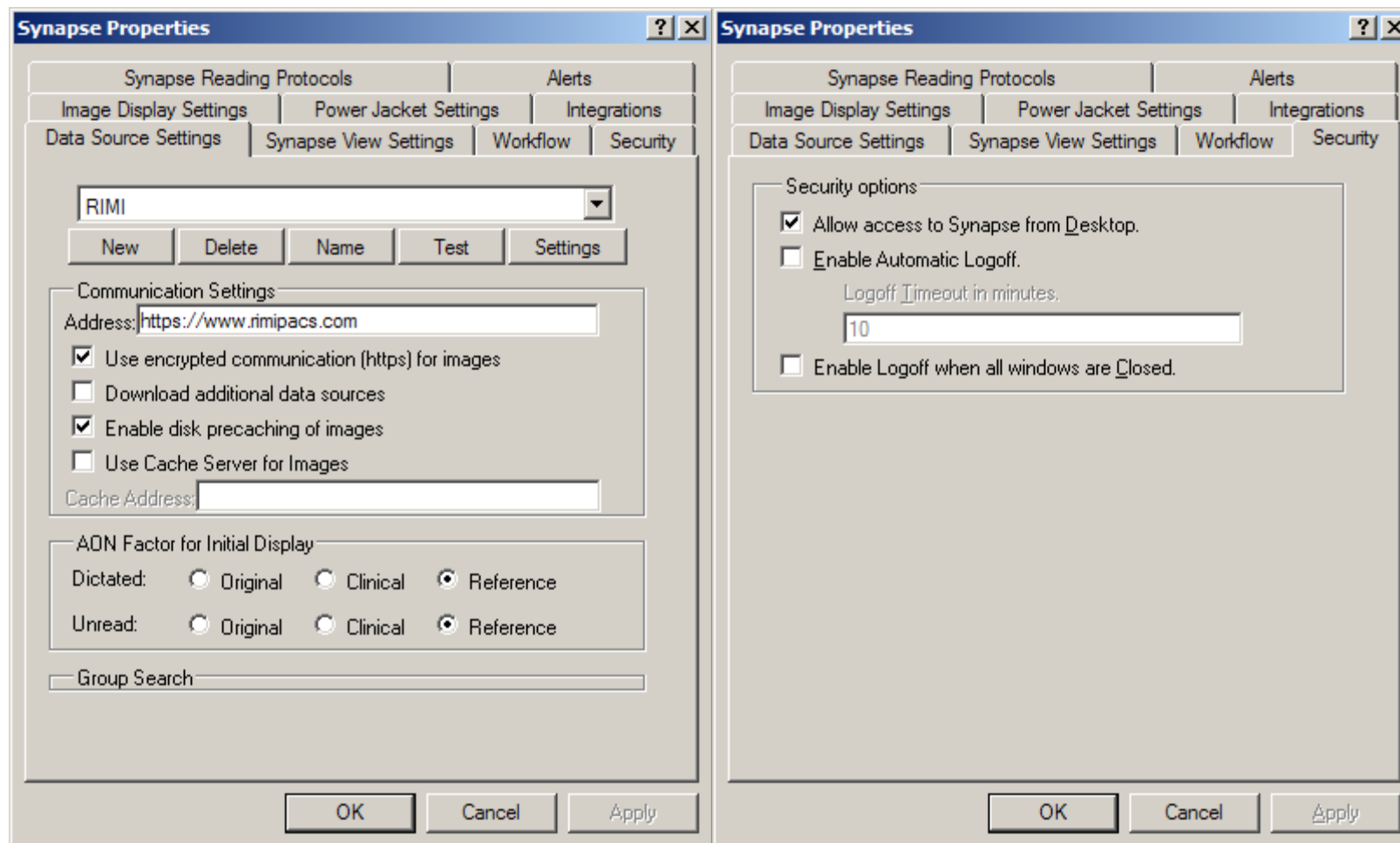


Note: you must be logged in to the PC with a user that has ADMINISTRATOR rights to continue.

Click and save the SynapseWorkstation.msi to the desktop. Run the .msi installer, following the default prompts. Once installed, right-click the Synapse icon on the desktop & choose Properties. Enter your Username and Password when prompted. Lastly, make sure the following settings are configured like they are illustrated below on the Data Source Settings & Security tabs.



If you have any issues or questions please contact RIMI IT @ 401-427-7871